

# FIREBLOCK SOLAR PV

NOBB modulnr. 41715059

**Bridgehill FireBlock Membrane** is a fire-resistant underlayment engineered for installation beneath solar panels. Its purpose is to stop fires from spreading from the panels into the roof structure. In the event of a solar panel fire, the membrane acts as a barrier, blocking flames and radiant heat while safeguarding insulation, timber, and other combustible materials within the roof assembly.

## Upcoming Certifications

CE-Certified  
EN 13501 -1  
EN 13501 -5  
ASTM 108  
Sintef technical approval

## Key Benefits

- Blocks fire and heat from solar panels
- Suitable for both new and existing roofs
- Up to 5% higher solar yield with bifacial PV panels
- Installs like a standard roofing underlayment



## Quantity Calculation

### Roll dimensions & weight:



34,5 m<sup>2</sup>  
371,35 ft<sup>2</sup>



1,15 m x 30 m  
3,77 ft x 98.43 ft



35 kg  
77.16 lbs

### Bulk quantities:



Single rolls



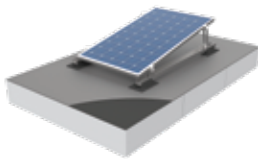
1 pallet  
12 rolls



## System Options

Refer to the full installation manual for detailed instructions.

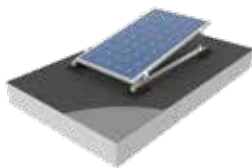
### Low-slope Roof Systems



#### 1.1

#### For installation under the waterproofing membrane

**Build-up:** structural deck → vapor barrier → insulation → FireBlock → waterproofing membrane → solar panels

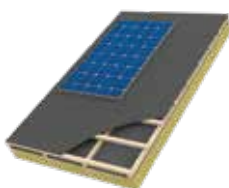


#### 2.1

#### For installation over the waterproofing membrane

**Build-up:** structural deck → vapor barrier → insulation → waterproofing membrane → FireBlock → solar panels

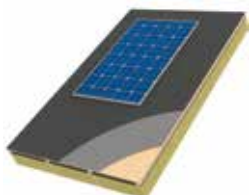
### Pitched Roof Systems



#### 3.1

#### For installation on battens

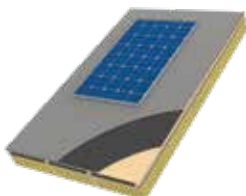
**Build-up:** Roof beams with insulation → underlayment (e.g. Tyvek) → battens and structural deck → FireBlock → solar panels.



#### 4.1

#### For installation on sheeted roof over bitumen

**Build-up:** Roof beams and insulation → underlayment (e.g. Tyvek) → battens/counter-battens → wooden deck → bitumen membrane → FireBlock → solar panels



#### 4.2

#### For installation on sheeted roof under bitumen

**Build-up:** Roof beams and insulation → Underlayment (e.g. Tyvek) → battens/counter-battens → wooden deck → FireBlock → bitumen membrane → solar panels

## Technical Sheet

SKU:	
<b>Primary Application:</b>	Roof fire barrier membrane designed to prevent fire spread.
<b>Size/Weight</b>	<b>Metric:</b> 1,15 m x 30 m   $\approx 35$ kg   $\approx 34,5$ m <sup>2</sup>
	<b>Imperial:</b> 98,43 ft x 3,77 ft   $\approx 77$ lbs   $\approx 371$ ft <sup>2</sup>
<b>Service temperature on core fabric</b>	Short term $\pm 1600$ °C / 2912 °F Long term $\pm 800$ °C / 1472 °F
<b>Upcomming Certifications</b>	<ul style="list-style-type: none"> <li>• EN 13501-1</li> <li>• EN 13501-5</li> <li>• ASTM 108</li> <li>• Sintef</li> </ul>
<b>Material</b>	Silica, Alumina, Calcium oxide and Boron oxide Bridgetech™ Polymer Coating